

# 1. WORKSHEET

name:

	SLOVAKIA	NORWAY
Color in the blank map: Slovakia in green and Norway in blue.		
Which country is larger in area?		
Which country has more fertile land?		
Where is permafrost located?		
Which country has more hydroelectric plants?		
Which country produces more waste?		
Which country sorts waste better?		
Which country has a higher water consumption?		



Norway  
grants



ZŠMŠ  
Maximiliana Hella  
Štiavnické Bane

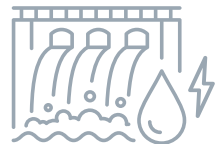
## 2. WORKSHEET

name: \_\_\_\_\_

**Complete the expressions from the table in the text:**



1. The biggest contributor to global warming is \_\_\_\_\_, caused by human activity.
2. Permafrost is an area with permanently frozen soil water, without or with \_\_\_\_\_ vegetation.
3. Slovakia is the second largest storehouse of \_\_\_\_\_ water in the world.
4. \_\_\_\_\_ is a power plant that converts the potential energy of water into electricity.
5. An area with sharply reduced ozone concentration due to human air pollution is called \_\_\_\_\_.
6. \_\_\_\_\_ represent the release of harmful substances into the air. They can be of natural or human origin.

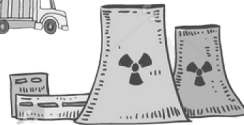
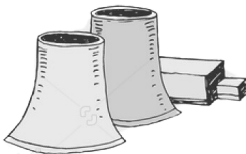
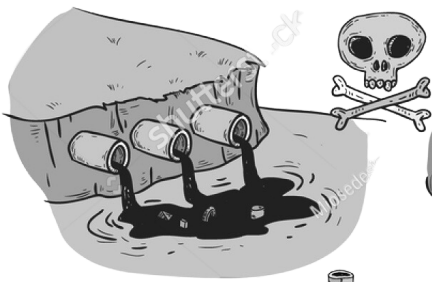


little	Hydroelectric plant	drinking
Emissions	carbon dioxide (CO <sub>2</sub> )	an ozone hole

# 3. WORKSHEET

name:

Discuss with a classmate using visuals. Compile a list of terms related to pollution, climate change, and global warming. Then facilitate a discussion with the entire class.



Norway  
grants



ZŠ MŠ  
Maximiliana Hella  
Štiavnické Bane

# 4. WORKSHEET

name:

## What can I do?

*Please mark the ideas you are already implementing*

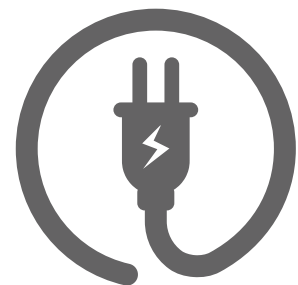
### **WATER**

- I always turn off the water while I brush my teeth
- I prefer to take a shower rather than a bath
- I flush the toilet with the right amount of water
- I collect rainwater for watering plants and garden
- I use the dishwasher and washing machine efficiently



### **ELECTRICITY**

- I don't open the fridge/freezer unnecessarily
- I don't put warm food in the fridge
- I turn off the light in an empty room
- I close the curtains and make use of the natural light
- I use the power-saving light bulbs



### **TRANSPORTATION**

- I prefer public transport
- I prefer walks, bicycle or scooter
- I avoid air transport



### **WASTE**

- I use my own shopping bag and reusable bags instead of plastic disposable ones from the store
- I buy only necessary things
- I look for "second hand" clothes, I buy through the bazaar,
- if possible, I buy in my own packaging
- above all, I sort waste honestly!!!



Norway  
grants